

2011 Opening Fall Enrollment

[ENROLLMENT BY STUDENT LEVEL AND STATUS](#)

[FULL-TIME EQUIVALENT \(FTE\) BY STUDENT LEVEL AND STATUS](#)

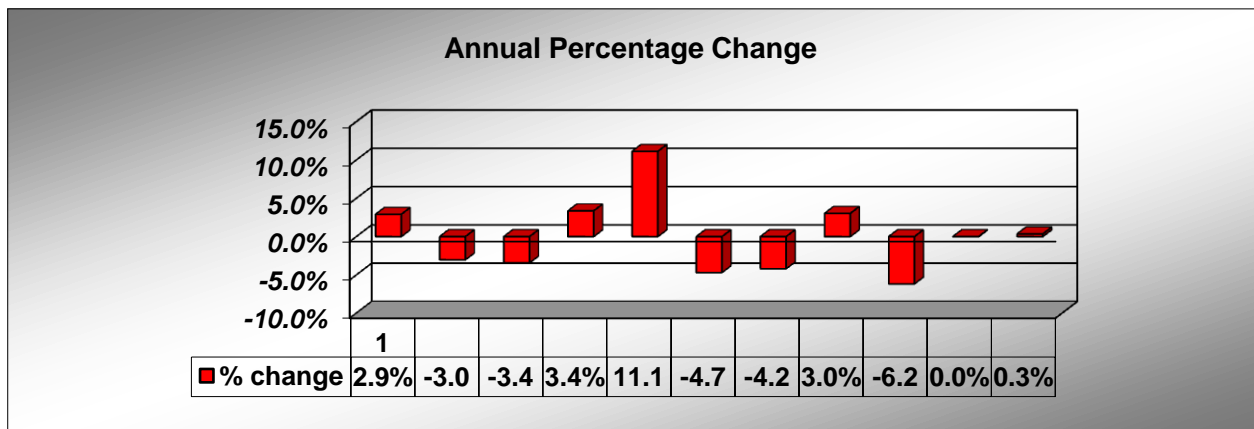
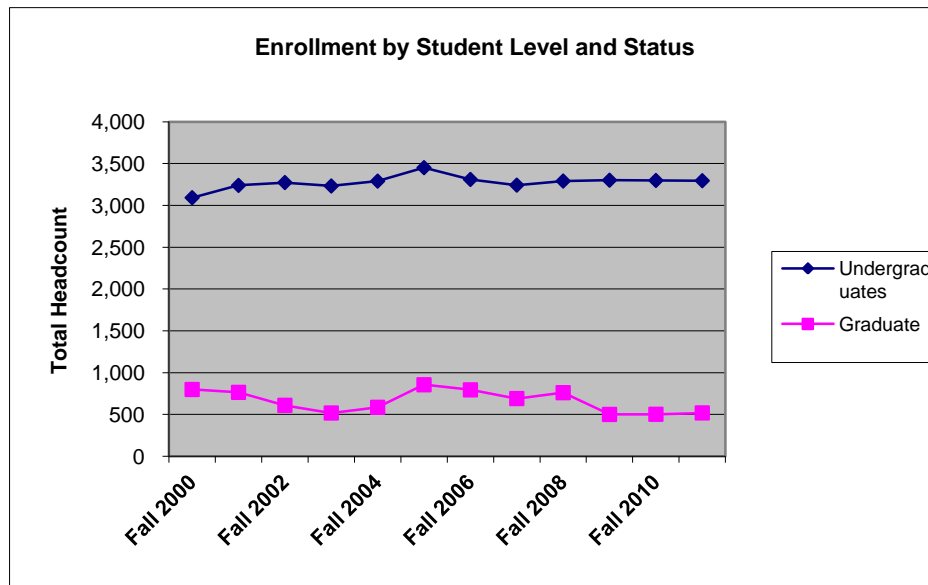
[ENROLLMENT BY STUDENT LEVEL AND GENDER](#)

[ENROLLMENT BY STUDENT LEVEL AND RESIDENT STATUS](#)

[FIRST-TIME FRESHMAN ENROLLMENT BY GENDER AND STATUS](#)

**TABLE 1
COPPIN STATE UNIVERSITY
ENROLLMENT BY STUDENT LEVEL AND STATUS
2000-2011**

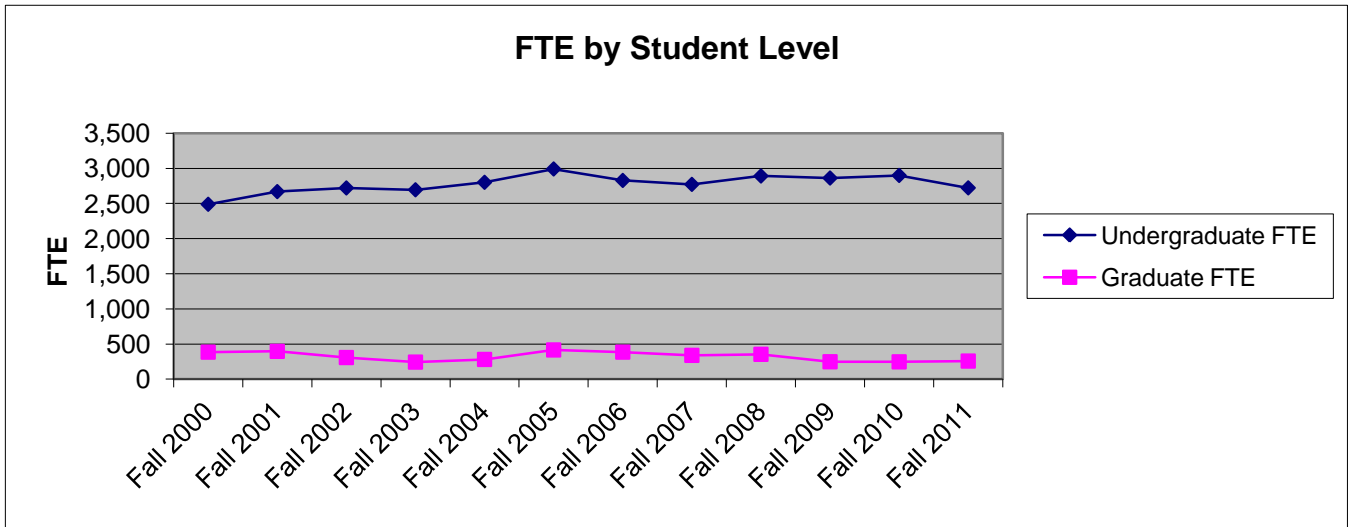
Semester	Undergraduates			Graduate			Total Headcount	Annual % Change
	Full-Time	Part-Time	Total	Full-Time	Part-Time	Total		
Fall 2000	2,161	931	3,092	29	769	798	3,890	
Fall 2001	2,351	888	3,239	36	728	764	4,003	2.9%
Fall 2002	2,418	855	3,273	34	575	609	3,882	-3.0%
Fall 2003	2,420	812	3,232	15	502	517	3,749	-3.4%
Fall 2004	2,546	744	3,290	159	426	585	3,875	3.4%
Fall 2005	2,727	724	3,451	232	623	855	4,306	11.1%
Fall 2006	2,545	765	3,310	216	578	794	4,104	-4.7%
Fall 2007	2,489	753	3,242	194	496	690	3,932	-4.2%
Fall 2008	2,574	717	3,291	185	575	760	4,051	3.0%
Fall 2009	2,575	726	3,301	142	358	500	3,801	-6.2%
Fall 2010	2,599	699	3,298	134	368	502	3,800	0.0%
Fall 2011	2,368	927	3,295	155	363	518	3,813	0.3%



Source: OIR official enrollment frozen file

**TABLE 2
FULL-TIME EQUIVALENT (FTE) BY STUDENT LEVEL AND STATUS
2000-2011**

Semester	Undergraduates			Graduate			Total	Annual
	Full-Time	Part-Time	Total	Full-Time	Part-Time	Total	FTE	% Change
Fall 2000	2,079	410	2,489	30	355	385	2,874	
Fall 2001	2,275	394	2,669	37	359	396	3,065	6.6%
Fall 2002	2,329	392	2,721	35	273	308	3,029	-1.2%
Fall 2003	2,329	366	2,695	15	228	243	2,938	-3.0%
Fall 2004	2,464	337	2,801	125	156	281	3,082	4.9%
Fall 2005	2,660	331	2,991	181	235	416	3,407	10.5%
Fall 2006	2,475	353	2,828	171	214	385	3,213	-5.7%
Fall 2007	2,420	352	2,772	152	187	339	3,111	-3.2%
Fall 2008	2,552	339	2,891	145	209	354	3,245	4.3%
Fall 2009	2,525	337	2,862	114	134	248	3,110	-4.2%
Fall 2010	2,565	334	2,899	108	139	247	3,146	1.2%
Fall 2011	2,284	438	2,722	123	135	258	2,980	-5.3%



Source: OIR official enrollment frozen file

**TABLE 3
ENROLLMENT BY STUDENT LEVEL AND GENDER
2000-2011**

Semester	Undergraduates			Graduate			Total	Annual
	Male	Female	Total	Male	Female	Total	Headcount	% Change
Fall 2000	816	2,276	3,092	186	612	798	3,890	
Fall 2001	808	2,431	3,239	173	591	764	4,003	2.9%
Fall 2002	801	2,472	3,273	155	454	609	3,882	-3.0%
Fall 2003	803	2,429	3,232	151	366	517	3,749	-3.4%
Fall 2004	782	2,508	3,290	148	437	585	3,875	3.4%
Fall 2005	791	2,660	3,451	174	681	855	4,306	11.1%
Fall 2006	708	2,602	3,310	171	623	794	4,104	-4.7%
Fall 2007	691	2,551	3,242	174	516	690	3,932	-4.2%
Fall 2008	734	2,557	3,291	162	598	760	4,051	3.0%
Fall 2009	783	2,518	3,301	121	379	500	3,801	-6.2%
Fall 2010	790	2,508	3,298	112	390	502	3,800	0.0%
Fall 2011	806	2,489	3,295	141	377	518	3,813	0.3%

PERCENTAGE DISTRIBUTION

Semester	Undergraduates		Graduate		Total
	Male	Female	Male	Female	Headcount
Fall 2000	21%	59%	5%	16%	100%
Fall 2001	20%	61%	4%	15%	100%
Fall 2002	21%	64%	4%	12%	100%
Fall 2003	21%	65%	4%	10%	100%
Fall 2004	20%	65%	4%	11%	100%
Fall 2005	18%	62%	4%	16%	100%
Fall 2006	17%	63%	4%	15%	100%
Fall 2007	18%	65%	4%	13%	100%
Fall 2008	18%	63%	4%	15%	100%
Fall 2009	21%	66%	3%	10%	100%
Fall 2010	21%	66%	3%	10%	100%
Fall 2011	21%	65%	4%	10%	100%

Source: OIR official enrollment frozen file

Note: Percents may not total to 100 percent based on rounding.

**TABLE 4
ENROLLMENT BY STUDENT LEVEL AND RESIDENT STATUS
2000-2011**

Semester	Undergraduates			Graduate			Total	Annual
	In-State	Out-of-State	Total	In-State	Out-of-State	Total	Headcount	% Change
Fall 2000	2,847	245	3,092	606	192	798	3,890	
Fall 2001	2,966	273	3,239	559	205	764	4,003	2.9%
Fall 2002	2,977	296	3,273	492	117	609	3,882	-3.0%
Fall 2003	2,896	336	3,232	478	39	517	3,749	-3.4%
Fall 2004	2,886	404	3,290	547	38	585	3,875	3.4%
Fall 2005	3,010	441	3,451	732	123	855	4,306	11.1%
Fall 2006	2,902	408	3,310	707	87	794	4,104	-4.7%
Fall 2007	2,834	408	3,242	603	87	690	3,932	-4.2%
Fall 2008	2,860	431	3,291	624	136	760	4,051	3.0%
Fall 2009	2,885	416	3,301	454	46	500	3,801	-6.2%
Fall 2010	2,888	410	3,298	463	39	502	3,800	0.0%
Fall 2011	2,972	323	3,295	474	44	518	3,813	0.3%

PERCENTAGE DISTRIBUTION

Semester	Undergraduates		Graduate		Total
	In-State	Out-of-State	In-State	Out-of-State	Headcount
Fall 2000	73%	6%	16%	5%	100%
Fall 2001	74%	7%	14%	5%	100%
Fall 2002	77%	8%	13%	3%	100%
Fall 2003	77%	9%	13%	1%	100%
Fall 2004	74%	10%	14%	1%	100%
Fall 2005	70%	10%	17%	3%	100%
Fall 2006	71%	10%	17%	2%	100%
Fall 2007	72%	10%	15%	2%	100%
Fall 2008	71%	11%	15%	3%	100%
Fall 2009	76%	11%	12%	1%	100%
Fall 2010	76%	11%	12%	1%	100%
Fall 2011	78%	8%	12%	1%	100%

Source: OIR official enrollment frozen file

Note: Percents may not total to 100 percent based on rounding.

**TABLE 5
FIRST-TIME FRESHMAN ENROLLMENT BY GENDER AND STATUS
2000-2011**

Semester	Men		Total	Women		Total	Total Headcount	Annual % Change
	Full-Time	Part-Time		Full-Time	Part-Time			
Fall 2000	128	13	141	289	42	331	472	
Fall 2001	156	14	170	384	44	428	598	26.7%
Fall 2002	149	9	158	430	31	461	619	3.5%
Fall 2003	139	7	146	432	43	475	621	0.3%
Fall 2004	150	25	175	451	52	503	678	9.2%
Fall 2005	167	13	180	522	40	562	742	9.4%
Fall 2006	109	11	120	399	36	435	555	-25.2%
Fall 2007	140	16	156	430	39	469	625	12.6%
Fall 2008	154	20	174	451	46	497	671	7.4%
Fall 2009	159	14	173	406	33	439	612	-8.8%
Fall 2010	159	8	167	366	40	406	573	-6.4%
Fall 2011	154	18	172	325	31	356	528	-7.9%

PERCENTAGE DISTRIBUTION

Semester	Men		Women		Total Headcount
	Full-Time	Part-Time	Full-Time	Part-Time	
Fall 2000	27%	3%	61%	9%	100%
Fall 2001	26%	2%	64%	7%	100%
Fall 2002	24%	1%	69%	5%	100%
Fall 2003	22%	1%	70%	7%	100%
Fall 2004	22%	4%	67%	8%	100%
Fall 2005	23%	2%	70%	5%	100%
Fall 2006	20%	2%	72%	6%	100%
Fall 2007	22%	3%	69%	6%	100%
Fall 2008	23%	3%	67%	7%	100%
Fall 2009	26%	2%	66%	5%	100%
Fall 2010	28%	1%	64%	7%	100%
Fall 2011	29%	3%	62%	6%	100%

Source: OIR official enrollment frozen file

Note: Percents may not total to 100 percent based on rounding.