



COPPIN STATE UNIVERSITY
Nurturing Potential . . . Transforming Lives

**Preliminary
Opening Fall 2009 Enrollment**

**Office of Institutional Research
September 30, 2009**

Introduction

Information for this report is drawn from the University PeopleSoft student system files, built from the daily transactions that represent the campus's official actions with respect to student enrollment.

Enrollment activity is ongoing, but a "freeze or snapshot" of the data is taken as of the end of the fourteenth calendar day of each semester. Fall 2009 "frozen" data were captured on September 21, 2009. The frozen file was processed, tested, and verified before they are put into table form for publication by the Office of Institutional Research (OIR).

For this *Preliminary Opening Enrollment* publication, we report aggregate enrollment activity as a whole by attendance status, gender, and residency within student level from fall 1998 to fall 2009. This will be followed later in the semester by the *Student Profile Report*, which provides detailed information at the school, department, and major level.

Key Findings:

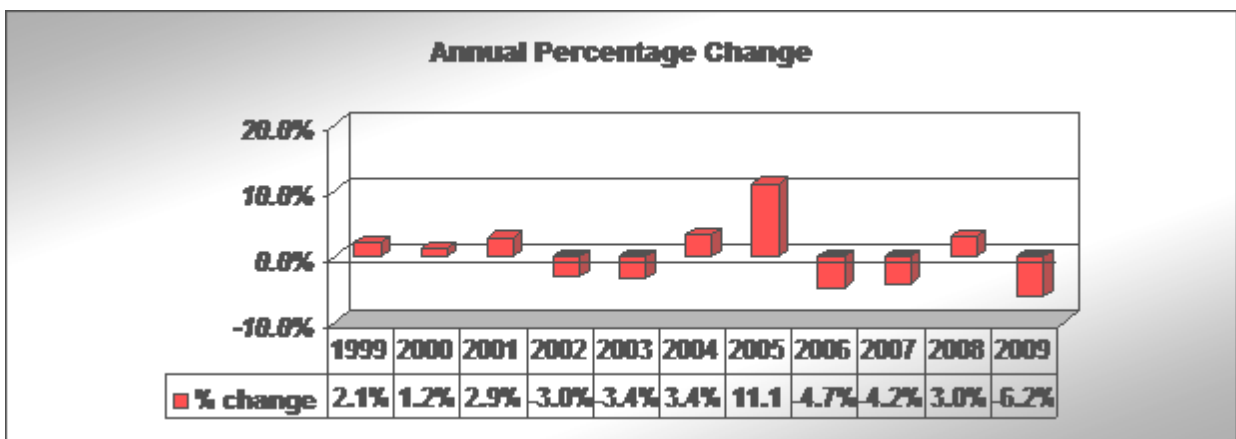
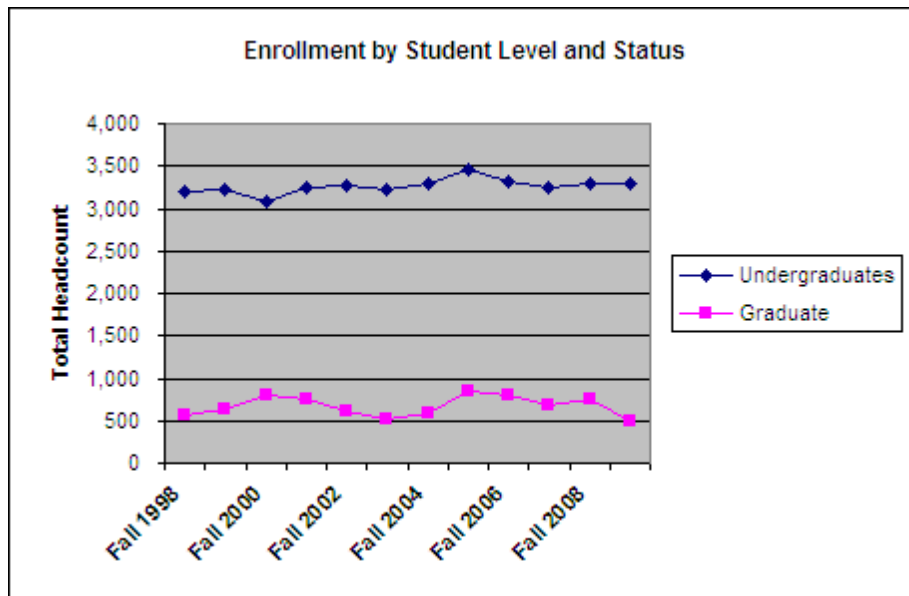
- Fall 2009 student headcount was 3,801, a decrease of 250 (or -6.2%) compared to fall 2008 (Table 1). The total headcount was 250 students lower than the projected headcount for fall 2009.
- The number of undergraduates remained relatively flat compared to last year. The number of full-time undergraduates remained flat (2,575 in 2009 vs. 2,574 in 2008), while the number of part-time undergraduates increased slightly by 1.3% (9), resulting in 3,301 undergraduate students (Table 1).
- The number of graduate students dropped sharply by 34%. The number of full-time graduate students decreased by 23% (-43), and the number of part-time graduate students decreased by 38% (-217), resulting in 500 graduate students (Table 1).
- Full-time equivalent (FTE) student majors (total credits divided by 15 for undergraduates and 12 for graduate students) decreased by 4.2% (135), from 3,245 in fall 2008 to 3,110 in fall 2009 (Table 2). Undergraduate FTE decreased by 29, while graduate FTE decreased by 106.
- Enrollment of undergraduate men grew 7%, from 734 in fall 2008 to 783 in fall 2009, while undergraduate women enrollment dropped by 39 (Table 3).
- The number of in-state undergraduate students enrolled increased 0.8% from 2,860 in fall 2008 to 2,885 in fall 2009, while out-of-state undergraduate decreased by 3.5%, from 431 in fall 2008 to 416 in fall 2009 (Table 4).
- The number of first-time freshman declined by 8.8%, from 671 students in fall 2008 to 612 students in fall 2009. In particular, the number of first-time female undergraduates declined by 11.7%, from 497 in fall 2008 to 439 in fall 2009 (See Table 5).

Fall 2009 First-Time Full-Time Freshmen Profile

- A total of 565 first-time full-time freshman were enrolled in fall 2009, down by 40 students from last year.
- Females slightly outnumbered males making up 72% of the total.
- In fall 2009 first-time full-time freshmen consisted mostly of students under the age of 20 at 79%.
- Eighty-three percent first-time full-time freshmen are in-state resident, 14% are out-of-state, and 3% are international students.
- The average high school GPA for first-time full-time freshmen remained at the same level (2.72 for 2009 cohort vs. 2.71 for 2008 cohort).
- Approximately 32% of first-time full-time freshmen reported high school grade point averages (GPA) equal or exceeding 3.00. Twenty-four percent (24%) indicated a high school GPA that fell between 3.00 and 3.49, while 8% reported a GPA of 3.50 or higher.
- The average combined SAT score among first-time full-time freshmen (875) increased by 19 points from fall 2008.
- Approximately 24% of the first-time full-time freshmen had not declared a major. The most popular undergraduate majors among the freshmen are Nursing, Sports Management, Management Science, and Criminal Justice.

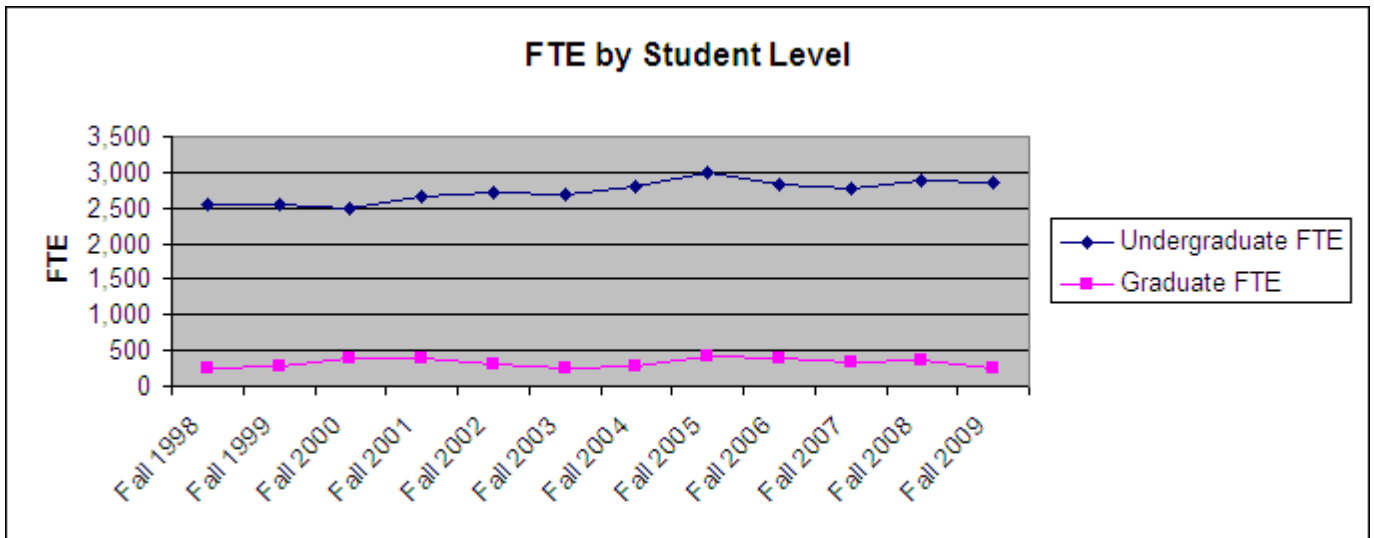
**TABLE 1
COPPIN STATE UNIVERSITY
ENROLLMENT BY STUDENT LEVEL AND STATUS
1998-2009**

Semester	Undergraduates			Graduate			Total Headcount	Annual % Change
	Full-Time	Part-Time	Total	Full-Time	Part-Time	Total		
Fall 1998	2,250	959	3,209	27	528	555	3,764	
Fall 1999	2,245	967	3,212	23	609	632	3,844	2.1%
Fall 2000	2,161	931	3,092	29	769	798	3,890	1.2%
Fall 2001	2,351	888	3,239	36	728	764	4,003	2.9%
Fall 2002	2,418	855	3,273	34	575	609	3,882	-3.0%
Fall 2003	2,420	812	3,232	15	502	517	3,749	-3.4%
Fall 2004	2,546	744	3,290	159	426	585	3,875	3.4%
Fall 2005	2,727	724	3,451	232	623	855	4,306	11.1%
Fall 2006	2,545	765	3,310	216	578	794	4,104	-4.7%
Fall 2007	2,489	753	3,242	194	496	690	3,932	-4.2%
Fall 2008	2,574	717	3,291	185	575	760	4,051	3.0%
Fall 2009	2,575	726	3,301	142	358	500	3,801	-6.2%



**TABLE 2
COPPIN STATE UNIVERSITY
FULL-TIME EQUIVALENT (FTE) BY STUDENT LEVEL AND STATUS
1998-2009**

Semester	Undergraduates			Graduate			Total FTE	Annual % Change
	Full-Time	Part-Time	Total	Full-Time	Part-Time	Total		
Fall 1998	2,138	418	2,556	30	212	242	2,798	
Fall 1999	2,124	411	2,535	23	248	271	2,806	0.3%
Fall 2000	2,079	410	2,489	30	355	385	2,874	2.4%
Fall 2001	2,275	394	2,669	37	359	396	3,065	6.6%
Fall 2002	2,329	392	2,721	35	273	308	3,029	-1.2%
Fall 2003	2,329	366	2,695	15	228	243	2,938	-3.0%
Fall 2004	2,464	337	2,801	125	156	281	3,082	4.9%
Fall 2005	2,660	331	2,991	181	235	416	3,407	10.5%
Fall 2006	2,475	353	2,828	171	214	385	3,213	-5.7%
Fall 2007	2,420	352	2,772	152	187	339	3,111	-3.2%
Fall 2008	2,552	339	2,891	145	209	354	3,245	4.3%
Fall 2009	2,525	337	2,862	114	134	248	3,110	-4.2%



Source: OIR official enrollment frozen file

**TABLE 3
ENROLLMENT BY STUDENT LEVEL AND GENDER
1998-2009**

Semester	Undergraduates			Graduate			Total	Annual
	Male	Female	Total	Male	Female	Total	Headcount	% Change
Fall 1998	856	2,353	3,209	164	391	555	3,764	
Fall 1999	857	2,355	3,212	170	462	632	3,844	2.1%
Fall 2000	816	2,276	3,092	186	612	798	3,890	1.2%
Fall 2001	808	2,431	3,239	173	591	764	4,003	2.9%
Fall 2002	801	2,472	3,273	155	454	609	3,882	-3.0%
Fall 2003	803	2,429	3,232	151	366	517	3,749	-3.4%
Fall 2004	782	2,508	3,290	148	437	585	3,875	3.4%
Fall 2005	791	2,660	3,451	174	681	855	4,306	11.1%
Fall 2006	708	2,602	3,310	171	623	794	4,104	-4.7%
Fall 2007	691	2,551	3,242	174	516	690	3,932	-4.2%
Fall 2008	734	2,557	3,291	162	598	760	4,051	3.0%
Fall 2009	783	2,518	3,301	121	379	500	3,801	-6.2%

PERCENTAGE DISTRIBUTION

Semester	Undergraduates		Graduate		Total
	Male	Female	Male	Female	Headcount
Fall 1998	23%	63%	4%	10%	100%
Fall 1999	22%	61%	4%	12%	100%
Fall 2000	21%	59%	5%	16%	100%
Fall 2001	20%	61%	4%	15%	100%
Fall 2002	21%	64%	4%	12%	100%
Fall 2003	21%	65%	4%	10%	100%
Fall 2004	20%	65%	4%	11%	100%
Fall 2005	18%	62%	4%	16%	100%
Fall 2006	17%	63%	4%	15%	100%
Fall 2007	18%	65%	4%	13%	100%
Fall 2008	18%	63%	4%	15%	100%
Fall 2009	21%	66%	3%	10%	100%

Source: OIR official enrollment frozen file

Note: Percents may not total to 100 percent based on rounding.

TABLE 4
ENROLLMENT BY STUDENT LEVEL AND RESIDENT STATUS
1998-2009

Semester	Undergraduates			Graduate			Total	Annual
	In-State	Out-of-State	Total	In-State	Out-of-State	Total	Headcount	% Change
Fall 1998	2,970	239	3,209	540	15	555	3,764	
Fall 1999	2,971	241	3,212	590	42	632	3,844	2.1%
Fall 2000	2,847	245	3,092	606	192	798	3,890	1.2%
Fall 2001	2,966	273	3,239	559	205	764	4,003	2.9%
Fall 2002	2,977	296	3,273	492	117	609	3,882	-3.0%
Fall 2003	2,896	336	3,232	478	39	517	3,749	-3.4%
Fall 2004	2,886	404	3,290	547	38	585	3,875	3.4%
Fall 2005	3,010	441	3,451	732	123	855	4,306	11.1%
Fall 2006	2,902	408	3,310	707	87	794	4,104	-4.7%
Fall 2007	2,834	408	3,242	603	87	690	3,932	-4.2%
Fall 2008	2,860	431	3,291	624	136	760	4,051	3.0%
Fall 2009	2,885	416	3,301	454	46	500	3,801	-6.2%

PERCENTAGE DISTRIBUTION

Semester	Undergraduates		Graduate		Total
	In-State	Out-of-State	In-State	Out-of-State	Headcount
Fall 1998	79%	6%	14%	0%	100%
Fall 1999	77%	6%	15%	1%	100%
Fall 2000	73%	6%	16%	5%	100%
Fall 2001	74%	7%	14%	5%	100%
Fall 2002	77%	8%	13%	3%	100%
Fall 2003	77%	9%	13%	1%	100%
Fall 2004	74%	10%	14%	1%	100%
Fall 2005	70%	10%	17%	3%	100%
Fall 2006	71%	10%	17%	2%	100%
Fall 2007	72%	10%	15%	2%	100%
Fall 2008	71%	11%	15%	3%	100%
Fall 2009	76%	11%	12%	1%	100%

Source: OIR official enrollment frozen file

Note: Percents may not total to 100 percent based on rounding.

**TABLE 5
FIRST-TIME FRESHMAN ENROLLMENT BY GENDER AND STATUS
1998-2009**

Semester	Men		Total	Women		Total	Total	Annual
	Full-Time	Part-Time		Headcount	% Change			
Fall 1998	120	22	142	337	42	379	521	
Fall 1999	135	12	147	306	49	355	502	-3.6%
Fall 2000	128	13	141	289	42	331	472	-6.0%
Fall 2001	156	14	170	384	44	428	598	26.7%
Fall 2002	149	9	158	430	31	461	619	3.5%
Fall 2003	139	7	146	432	43	475	621	0.3%
Fall 2004	150	25	175	451	52	503	678	9.2%
Fall 2005	167	13	180	522	40	562	742	9.4%
Fall 2006	109	11	120	399	36	435	555	-25.2%
Fall 2007	140	16	156	430	39	469	625	12.6%
Fall 2008	154	20	174	451	46	497	671	7.4%
Fall 2009	159	14	173	406	33	439	612	-8.8%

PERCENTAGE DISTRIBUTION

Semester	Men		Women		Total
	Full-Time	Part-Time	Full-Time	Part-Time	Headcount
Fall 1998	23%	4%	65%	8%	100%
Fall 1999	27%	2%	61%	10%	100%
Fall 2000	27%	3%	61%	9%	100%
Fall 2001	26%	2%	64%	7%	100%
Fall 2002	24%	1%	69%	5%	100%
Fall 2003	22%	1%	70%	7%	100%
Fall 2004	22%	4%	67%	8%	100%
Fall 2005	23%	2%	70%	5%	100%
Fall 2006	20%	2%	72%	6%	100%
Fall 2007	22%	3%	69%	6%	100%
Fall 2008	23%	3%	67%	7%	100%
Fall 2009	26%	2%	66%	5%	100%

Source: OIR official enrollment frozen file

Note: Percents may not total to 100 percent based on rounding.